
Property Marking Systems

as used by

Leading Railroads

THE need of railroads for systems of marking that will give permanent and legible identification extends to many properties.

Most railroads now find it of advantage to use metal characters for:

Mile Post Marking.

Numbering and Ownership identification of Poles.

Transposition Marking.

Marking Dispatcher's and Message Circuits.

Numbering Signal Masts.

Marking Rolling Stock.

Marking Bridges and Culverts.

Designating Stores Bins, Sections, etc.

Marking Tool Houses, Bunkers, Sheds, Other Structures and Miscellaneous equipment.

Railroad companies find that Premax Metal Letters and Figures are ideal for marking their properties since these smooth aluminum characters are not subject to corrosion or rust. They are particularly adapted to use along the railroad right of way where soot and smoke are prevalent. For these reasons, many leading railroads have standardized on Premax Markers.

Two major factors in the wide adoption of Aluminum Markers by railroads are:

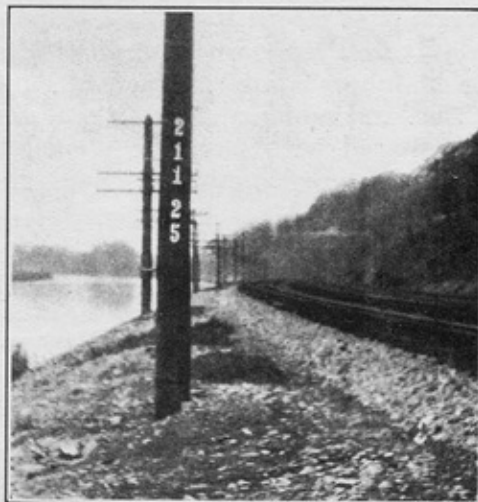
1st. The rulings of State Public Service Commissions that properties must be marked.

2nd. Standardization on creosoted poles, on which it is impossible to paint or stencil.

Mile Post Marking on the New York Central Railroad

For several years the New York Central Railroad has been using Premax numbers for mile post marking. A 6-inch raised figure on a black enameled background has been most generally employed.

"Premax Numerals give us the desired references we want," says the engineer in charge of this work for the whole system. "During more than three years' service they have shown no deterioration and the numbers can be readily seen from passing trains in accordance with our wishes."



Showing Premax 6-inch Numbers, used in pole marking service by the New York Central Railroad.

The Economy and Convenience of Premax Pole Markers

The New York, Ontario & Western Railway Company, which uses Premax Markers for pole numbering and identi-